



# MONTINI

SPECIAL ELECTRIC FORKLIFT TRUCKS



THE NEW 96V FORKLIFT TRUCKS WITH LOAD CAPACITIES  
FROM 6000 KG TO 12000 KG FOR **HANDLING HEAVY LOADS**

**MR 6 - MR 7 - MR 8**  
**MR 9 - MR 10 - MR 12**

## THE NEW HEAVY DUTY FORKLIFT TRUCKS DESIGNED TO MEET SPECIAL REQUIREMENTS

MONTINI's leadership lies in being able to offer a wide range of special electric forklift trucks capable of meeting the specific and personalised needs of its customers.

MONTINI expands its range of **heavy duty** counterbalanced electric forklift trucks with these new **96V** models for loads **from 6000 kg to 12000 kg at load centre 600 mm**.

The MONTINI MR 6, MR 7, MR 8, MR 9, MR 10 and MR 12 forklift trucks are well suited to multiple customisable logistic solutions and are **designed for heavy duty applications** including steel and wood mills, beverage companies, mechanical and metal fabrication, iron foundries, heavy carpentry and aerospace industry.

## HANDY, POWERFUL, ZERO EMISSIONS FOR GREAT PERFORMANCE

MONTINI has always developed electric vehicles that represent the best compromise between performance and environmental sustainability.

MONTINI MR electric forklift trucks with load capacities from 6000 kg to 12000 kg are a combination of power and technology with zero emissions, **ideal for working outdoors or indoors** even in the presence of dust and moisture.

These models by MONTINI represent a complete range for anyone needing a **sustainable ecological and silent lift truck** with zero CO<sub>2</sub> emissions, performance levels comparable to those offered by internal combustion vehicles and energy and maintenance cost savings, all without having to compromise on results.



## MONTINI SUPER STEERING TO STEER WHERE YOU NEVER THOUGHT POSSIBLE

The **MONTINI SUPER STEERING**, rear-axle steering up to **101 degrees**, is designed and built by MONTINI and **supplied as standard** on the MONTINI MR forklift trucks with load capacities from 6000 kg to 12000 kg fitted with front single tyres to **work in very narrow spaces**, providing maximum manoeuvrability and the best possible driving experience, without ever sacrificing productivity.



## ALTERNATING CURRENT (AC) TWIN-MOTOR BETTER PERFORMANCE, GREATER AUTONOMY

The twin-motor traction, with innovative electronic technology with alternating current inverters and CanBus communication, guarantees:

- incredible torque and superior performance for acceleration, lifting and travelling;
- high efficiency and low energy consumption;
- excellent functionality of the electronic system;
- extended battery life, thanks to the excellent efficiency of the electric motors, which provide high performance over a wide range of speeds;
- no polluting emissions released into the atmosphere, respecting the quality of the environment.

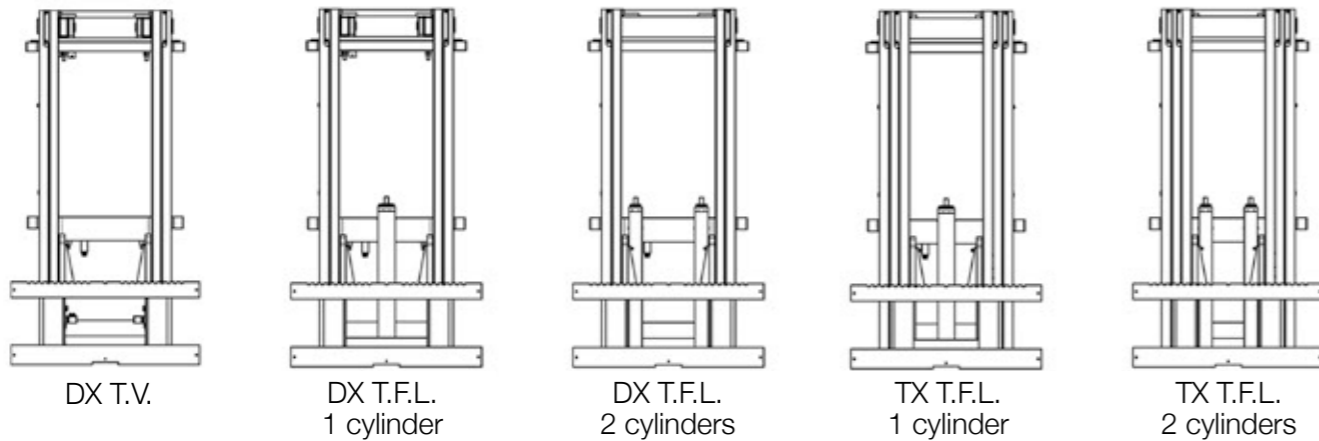
# MAST

## GREAT STRENGTH AND LOAD CAPACITY

In order to effectively meet market demands, MONTINI equips these forklift trucks with a **wide range of masts** available in the following versions:

- DX (Duplex) with total visibility (T.V.)
- DX (Duplex) with total free lift (T.F.L.) with 1 central cylinder
- DX (Duplex) with total free lift (T.F.L.) with 2 internal cylinders
- TX (Triplex) with total free lift (T.F.L.) with 1 central cylinder
- TX (Triplex) with total free lift (T.F.L.) with 2 internal cylinders

for optimal load capacities for all types of performance, and to offer a safe and strong load capacity.



**Customized masts solutions** for reliably handling important loads and suited to meet the user's specific production needs.

Mast configurations with **specific additional equipments** for every need, in particular paper roll clamps, bale clamps, multipallet fork positioners, steel coil booms.



# HIGH BATTERY AUTONOMY

## FOR LONG WORK SHIFTS

These MONTINI models are available with **high-performance 96V lead-acid batteries**, to tackle long work shifts and deal with the most demanding use, ensuring intense work activity, more power, more performance and more acceleration.

Thanks to **batteries up to 1700Ah**, you can reach speeds of almost 20 km/h and high performance for an endless work shift, without the need to replace the batteries.

MONTINI heavy-duty forklift trucks are standard equipped with **lateral quick replacement of the battery for those customers who need to work multiple shifts**.

The battery is supplied in two individual blocks positioned on the sides of the lift truck's solid chassis to facilitate pulling out and handling.



**Changing the battery** is quick and easy, customizable to the needs of each warehouse, and can be carried out in various ways:

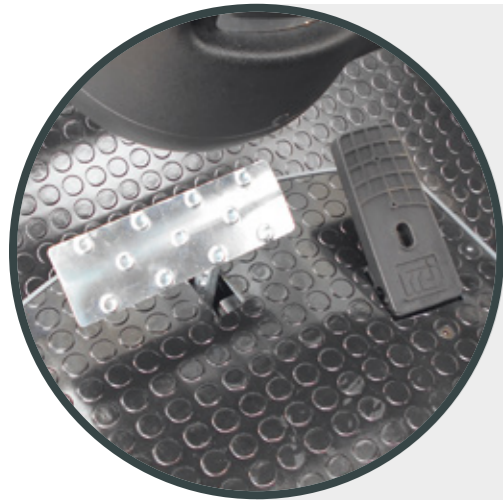
- **mechanical** (standard), using a second forklift truck or a pallet truck;
- **hydraulic** (optional), for automatic battery extraction.



## PEDAL BOARDS

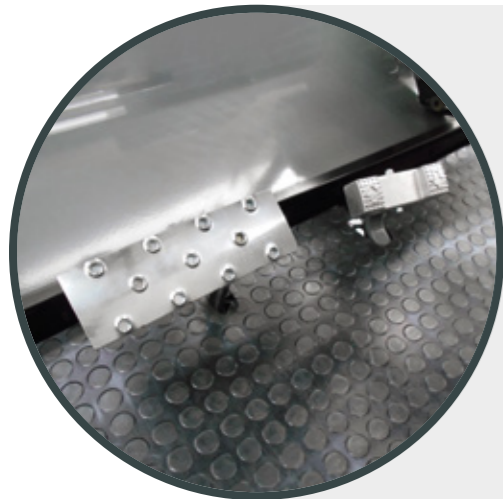
### STANDARD OR OPTIONAL

With a view to customizing the lift trucks in order to meet operator needs, MONTINI offers different types of **pedal boards**, available as standard or as an optional.



#### STANDARD

Standard, large and spacious pedal board with a single drive pedal (forward/reverse direction buttons on the joystick) and large brake pedal.



#### OPTIONAL

As an optional, a pedal board with a rocker-type forward/reverse pedal and large brake pedal is available.



#### OPTIONAL

For the comfort and efficiency of the operator, a foot control area with two drive pedals (forward and reverse) and a central brake pedal can also be supplied as an optional.

## PRECISION AND PERFORMANCE

### THANKS TO THE HYDRAULIC CONTROLS

These forklift trucks can be equipped at choice with **different hydraulic controls** to ensure maximum efficiency and productivity, not to mention exceptional driving comfort.

The intuitive and ergonomic hydraulic control with **joystick** allows the operator to activate all the hydraulic functions of the lift truck using a single control lever. Maximum productivity thanks to the use of two simultaneous operating functions of the lifting unit.



The simple to use and easily accessible hydraulic control with **fingertips** (mini-levers) is installed in an ergonomic and adjustable armrest. Simply operate the fingertip controls gently for agile, precise and safe handling.



The hydraulic control with **pilot levers** (mini-joysticks) makes driving the forklift truck easy and reliable. Easily accessible and simple to use, it is installed in an ergonomic and adjustable armrest to guarantee comfortable driving positions.



# A LOOK AT THE CAB

## WIDE VISIBILITY AND COMFORTABLE DRIVING POSITION

The comfortable and spacious driver's cab is positioned on special **anti-vibration mounts (silent blocks)**, designed to reduce vibrations and noise in the cab, providing additional comfort and facilitating the operator's daily work to guarantee greater control and constant precision, even in the demanding working conditions.

The driving position is spacious and easily accessible, thanks to the **convenient and wide steps**.

It offers **ample foot space** and an **extremely comfortable seat** and is designed to **ensure excellent visibility** and **maximum safety**, even when handling the bulkiest of loads.



# ERGONOMICS AND FUNCTIONALITY

## FOR HIGH LEVELS OF PERFORMANCE

The seat, together with all the main control devices, can rotate hydraulically up to **90 degrees**, guaranteeing maximum operator comfort and visibility in all working conditions while also reducing the risk of occupational disorders.

By rotating the driver's seat by up to **90 degrees**, the operator can achieve the **best possible visibility**; this means being able to keep both the load and the operating area under control when using the lift truck in reverse or when there is poor frontal visibility, facilitating lift truck operation and ensuring constant precision.



These forklift trucks can be customized with a **wide range of optional accessories and equipment**, to meet the demands of end users.



The **air conditioning unit**, available as an optional extra, creates a pleasant climate thanks to the various ventilation outlets.



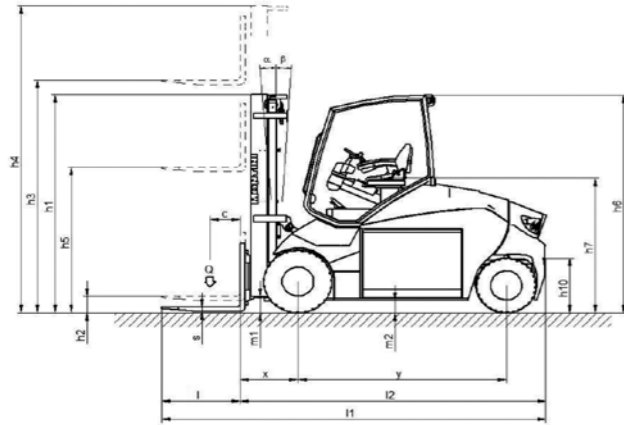
The **heater**, available as an optional extra, directly and quickly heats up the cab interior thanks to the hot air vents.



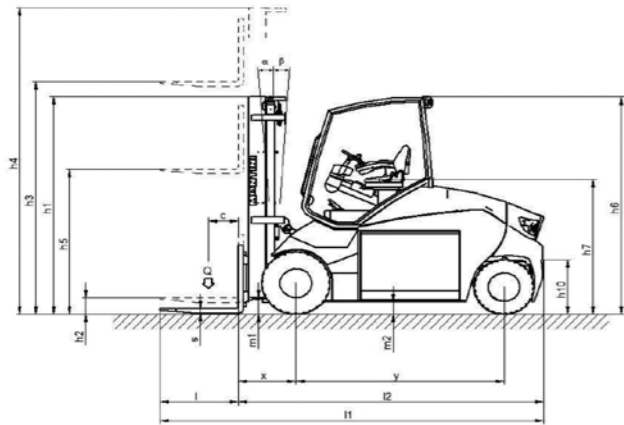
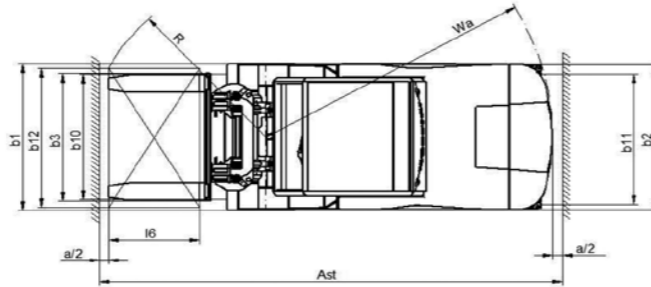
In order to improve visibility, operator comfort and safety, the **driver's cab** has been designed **with full-glass** as an option, to **ensure an all-round view**, thanks to the large windshield that extends from the front to the rear passing over the roof.



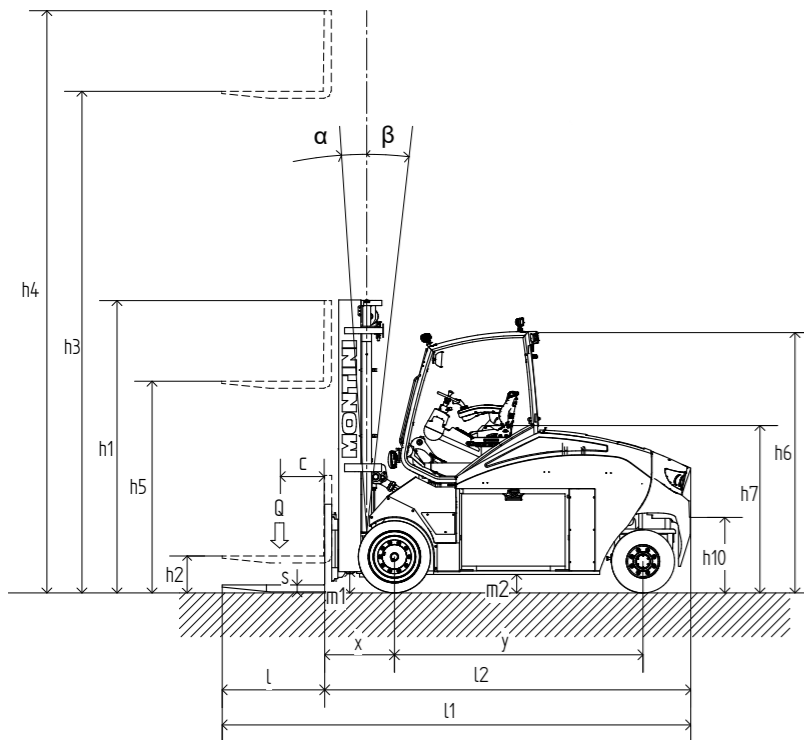
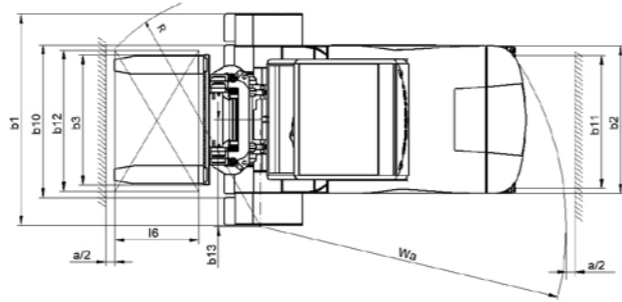
# TECHNICAL FEATURES



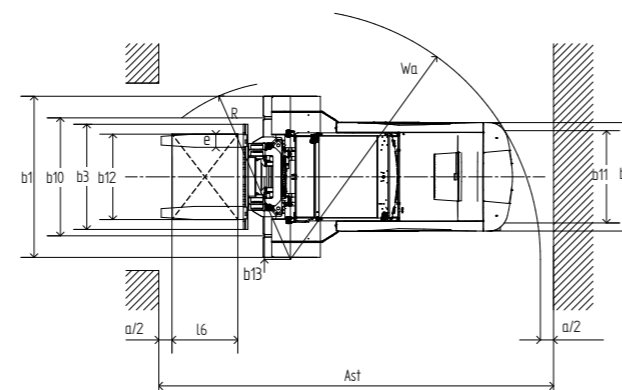
MR 6 - MR 7



MR 8 - MR 9 - MR 10



MR 12



		MR 6	MR 7	MR 8	MR 9	MR 10	MR 12	
FEATURES	1.2 Model							
	1.3 Power supply: electric, diesel, petrol, LPG, electric mains	electric	electric	electric	electric	electric	electric	
	1.4 Drive type: hand-guided, pedestrian, stand-on, sit-on, order picker	sit-on	sit-on	sit-on	sit-on	sit-on	sit-on	
	1.5 Capacity/Load	Q (t)	6	7	8	9	10	12
	1.6 Load centre	c (mm)	600	600	600	600	600	600
	1.8 Load distance	x (mm)	682 <b>1.</b>	682 <b>1.</b>	707 <b>1.</b>	781 <b>1.</b>	781 <b>1.</b>	781 <b>1.</b>
	1.9 Wheelbase	y (mm)	2500	2500	2500	2500	2500	2800
	2.1 Weight	Kg	13002	13640	14390	16900	17600	18800
	2.2 Axle load, front/rear, laden	Kg	16408/2594	18060/2580	19750/2640	23785/2115	25328/2272	28020/2780
2.3 Axle load, front/rear, unladen	Kg	7271/5731	7470/6170	7570/6820	9900/7000	9900/7700	10100/8700	
WEIGHTS	3.1 Tyres: superelastic (SE), cushion (C), pneumatic (PN)		SE	SE	SE	SE	SE	
	3.2 Tyre size, front		355/65-15	355/50-20	315/70-15	355/50-20	355/50-20	355/50-20
	3.3 Tyre size, rear		250/70-15	250/70-15	250/70-15	250/70-15	250/70-15	315/70-15
	3.5 Wheels, number front/rear (x=driven wheel)		2x/2	2x/2	4x/2	4x/2	4x/2	4x/2
	3.6 Track width, front	b10 (mm)	1355	1355	1590	1667	1667	1795
	3.7 Track width, rear	b11 (mm)	1409	1409	1409	1409	1409	1405
	EQUIPMENT	4.1 Max. tilt of mast/fork carriage, forward/backward (α-β)	Degrees	5°/10°	5°/10°	5°/10°	5°/10°	5°/10°
4.2 Lowered mast height		h1 (mm)	2870	2870	2870	3020	3020	3020
4.3 Free lift		h2 (mm)	-	-	-	-	-	-
4.4 Lifting height		h3 (mm)	4000	4000	4000	4000	4000	4000
4.5 Extended mast height		h4 (mm)	4800	4800	4800	4800	4800	4800
4.7 Overhead guard height		h6 (mm)	2870	2870	2870	2870	2870	3079
4.8 Seat height		h7 (mm)	1807	1807	1807	1807	1807	1811
4.12 Tow coupling height		h10 (mm)	775	775	775	775	775	855
4.19 Total length		l1 (mm)	4863	4863	4888	4962	4962	5266
4.20 Length to face of forks		l2 (mm)	3663	3663	3688	3762	3762	4081
4.21 Overall width		b1/b2 (mm)	1670/1650	1670/1650	2130/1650	2362/1650	2362/1650	2362/1650
4.22 Forks dimensions		s/e/l (mm)	60/200/1200	60/200/1200	60/200/1200	70/200/1200	70/200/1200	70/200/1200
4.23 Fork carriage (ISO 2330, class/type A, B)			4A	4A	4A	5A	5A	-
4.24 Min. fork carriage width		b3 (mm)	1450	1450	1800	1800	1800	1800
4.31 Ground clearance, under mast, laden		m1 (mm)	225	225	225	225	225	225
4.32 Ground clearance, centre of wheelbase		m2 (mm)	150	150	150	150	150	325
4.33 Aisle width with pallet 1000x1200 (l6xb12) (pick-up side 1200)		Ast (mm)	4967 <b>2.</b>	4967 <b>2.</b>	5272 <b>2.</b>	5409 <b>2.</b>	5409 <b>2.</b>	5848 <b>2.</b>
4.34 Aisle width with pallet 800x1200 (b12xl6) (pick-up side 800)		Ast (mm)	5105 <b>2.</b>	5105 <b>2.</b>	5472 <b>2.</b>	5609 <b>2.</b>	5609 <b>2.</b>	5996 <b>2.</b>
4.35 Turning radius		Wa (mm)	2981	2981	3365	3428	3428	3784
4.36 Distance from turning centre and truck centre axis	b13 (mm)	0	0	1080	1158	1158	1256	
OVERALL DIMENSIONS	5.1 Travel speed, laden/unladen	Km/h	18/18	18/18	17/18	16/18	15/18	10/12
	5.2 Lift speed, laden/unladen	m/s	0.38/0.40	0.37/0.40	0.35/0.40	0.35/0.40	0.35/0.40	0.28/0.33
	5.3 Lowering speed, laden/unladen	m/s	0.44/0.34	0.45/0.34	0.50/0.40	0.51/0.40	0.52/0.40	0.52/0.40
	5.5 Drawbar pull, laden/unladen	N	-	-	-	-	-	-
	5.6 Max. drawbar pull, laden/unladen	N	40000	40000	40000	40000	40000	40000
	5.7 Gradeability, laden/unladen	%	17/25	15/23	13/21	12/20	11/19	9/17
	5.8 Max. gradeability, laden/unladen	%	21/32	19/29	16/26	15/25	14/24	12/22
	5.9 Acceleration time, laden/unladen	s	5.5/5	5.5/5	5.5/5	5.5/5	5.5/5	-
	5.10 Service brake		hydraulic/electric	hydraulic/electric	hydraulic/electric	hydraulic/electric	hydraulic/electric	hydraulic/electric
	DATA AND PERFORMANCE	6.1 Traction motor, output S2 60'	Kw	2x20	2x20	2x20	2x20	2x20
6.2 Lift motor, output S3 20%		Kw	2x28	2x28	2x28	2x33.5	2x33.5	2x33.5
6.3 Battery according to DIN 43531/35/36 A, B, C			-	-	-	-	-	-
6.4 Rated voltage/capacity 5h		V/Ah	96/800-1150 <b>3.</b>	96/1000-1700 <b>3.</b>	96/1150-1700 <b>3.</b>	96/1150-1700 <b>3.</b>	96/1150-1700 <b>3.</b>	96/1700 <b>3.</b>
6.5 Battery weight, min./max.		Kg	2636/3720	4320/4500	4320/4500	4320/4500	4320/4500	4320/4550
6.6 Energy consumption according to VDI cycle		KWh/h	-	-	-	-	-	-
ELECTRIC MOTOR	8.1 Type of electronic control		inverter	inverter	inverter	inverter	inverter	
	8.2 Working pressure for auxiliary equipment	bar	200	200	200	200	200	250
	8.3 Oil flow rate for auxiliary equipment	l/min	70	70	70	70	70	80
	8.4 Noise level at operator's ear	db (A)	<70	<70	<70	<70	<70	-
	8.5 Tow coupling, model/type		-	-	-	-	-	-
MISCELLANEA	8.1 Type of electronic control		inverter	inverter	inverter	inverter	inverter	
	8.2 Working pressure for auxiliary equipment	bar	200	200	200	200	200	250
	8.3 Oil flow rate for auxiliary equipment	l/min	70	70	70	70	70	80
	8.4 Noise level at operator's ear	db (A)	<70	<70	<70	<70	<70	-
	8.5 Tow coupling, model/type		-	-	-	-	-	-

1. Without sideshift
2. Ast = Wa + R + a (a = 200 mm) for MR 6 - MR 7 - MR 12
3. Ast = Wa + x + l6 + a (a = 200 mm) for MR 8 - MR 9 - MR 10
3. 96/1320 with Exide TENSOR batteries (+15% run time) for MR 6
3. 96/1680 with Exide TENSOR batteries (+18% run time) for MR 7 - MR 8 - MR 9 - MR 10 - MR 12



# MONTINI

SPECIAL ELECTRIC FORKLIFT TRUCKS

## Choose specialization.

Choose MONTINI special electric lift trucks.

### MONTINI di Garotti Francesco & C. s.n.c.

IT - 48022 Lugo RA  
Via A. da Barbiano, 8-10  
Tel. +39 0545 991001  
Fax +39 0545 42150



[info@montini.biz](mailto:info@montini.biz)  
[www.montini.biz](http://www.montini.biz)